



Redefine the user experience

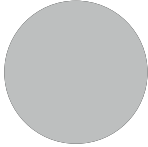
Materials, accessories and user interface devices for KONE MonoSpace 300 DX

www.kone.ae

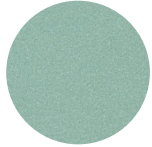
Dedicated to
People Flow™

Walls

Painted steel



P51
Misty Grey
(RAL 9006)
🌱



P62
Blue Reflection
🌱



P63
Cottongrass White
(RAL 9003)
🌱

Printed steel



PS9
Light Wood
🌱



PS10
Dark Wood
🌱



PS11
Grayed Wood
🌱

Smart laminate*



L243
Ultimate Gray
🌱

Wooden laminate



L235
Whitened Ash
🌱



L236
Natural Oak
🌱



L238
Warm Oak
🌱

Brushed stainless steel

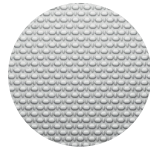


F
Asturias Satin
🌱

Resistant stainless steel



K
Scottish Quad
🌱



TS1
Flemish Linen
🌱

Local wall



Z
Raw surface for local paint
or decorative panels
🌱

Note:

🌱 LEED/BREEAM

* Matt finish, anti-fingerprint, anti-bacterial, reparability and stain resistant to reduce the amount of cleaning required

Sustainability as our core value

We choose sustainability every day. Our objective is to be a leader in sustainability – not only in our own industry, but also beyond. We want to help our customers make cities better places to live and be their most trusted partner for them throughout their building life cycle.

Doors

Painted steel

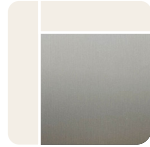


P51
Misty Grey
(RAL 9006)



P63
Cottongrass White
(RAL 9003)

Stainless steel texture



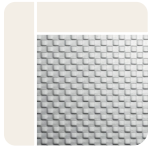
SA1
Silver Satin

Brushed stainless steel



F
Asturias Satin

Resistant stainless steel



K
Scottish Quad



TS1
Flemish Linen

Local door



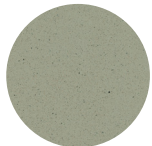
Z
Raw surface for
local finishing

Floors

Rubber



RC30
Carbon Black



RC32
Beige Gray

Composite stone



SF42
Gray Granite

Local flooring



0
Raw surface for local
finishing

Note:
 LEED/BREEAM

Design online with KONE Studio

Explore different elevator options and configurations online before starting a new project. Make the right design choices, use the correct dimensions and get accurate planning specifications.



Design with 3D visuals

Find the look you love with a simple, easy-to-use and free online design tool.



Use exact building specifications

Optimize planning with accurate and always up-to-date product data.



Save project details

Test and finalize your custom designs, then make changes later if needed.



Export CAD and BIM drawings

Identify potential issues and plan ahead to avoid surprises during construction.

Scan the QR code to
try the KONE Studio

www.kone.ae



Ceilings



CL80
Cottongrass White (P63)
Asturias Satin (F)

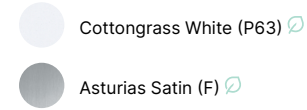


CL96
Cottongrass White (P63)
Asturias Satin (F)

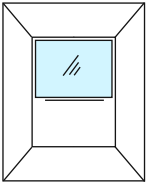


RL12
Cottongrass White (P63)
Asturias Satin (F)

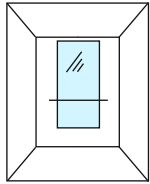
Ceiling finishes



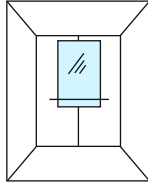
Mirrors



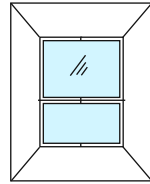
MR1
Partial width
Partial height



MR1
Full width
Partial height



MR1
Partial width
Mid height

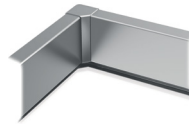


MR1
Full width
Full height



Wide Angle Mirror

Skirting



F
Asturias Satin

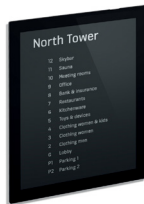
Handrails



HR53 (EN81-70)
Asturias Satin (F)

Note:
 LEED/BREEAM

Tenant directory



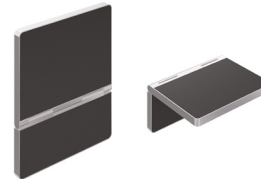
Installation: Horizontal or vertical
Sizes: A3 or A4

KONE MediaScreen



15" LCD display Surface mounted

Seats



L234
Granite Gray

Car signalization (COP)



KSC 186
Partial height

Mounting type

COP: surface
Button: surface



KONE Interact 10
Full height

Mounting type

COP: flush or surface
Button: surface

Surface mounting
available within Q1 2025

Display



5,7" LCD



7" TFT

Lens



Black, round



Black, square

Faceplate finish



Silver brushed stainless steel
(ST4)



Asturias Satin (F)

Faceplate finish

KSS H – Accessible excellence



KSC H70, up to 12 buttons
KSC H40, up to 6 buttons

Landing signalization

Surface mounted



KSL170



KSL 186



KSL280

KSL284

KSL286
Simplex

KSL286
Duplex

Hall displays



KSH280



KSI286



KSJ280



KONE provides innovative and eco-efficient solutions for elevators, escalators, automatic building doors and the systems that integrate them with today's intelligent buildings. We support our customers every step of the way: from design, manufacturing and installation to maintenance and modernization. KONE is a global leader in managing the smooth flow of people and goods throughout buildings. This makes us a reliable partner throughout the building life cycle. We are fast, flexible, and we have a well-deserved reputation as a technology leader, with such innovations as KONE 24/7 Connected Services and KONE UltraRope®. KONE employs over 60,000 dedicated experts to serve you globally and locally.

UAE

Dubai (Regional Office)

KONE Middle East LLC
U-Bora Tower,
C/O Al Abraj Str & Al Khaleej Str,
Business Bay.
P.O. Box 21474
Tel: +971 4 279 4500
www.kone.ae

Kingdom of Saudi Arabia

Riyadh (Head Office)

KONE Areeco Ltd
King Fahad Road,
Olaya District,
Al Hamad Tower, Floor 8.
P.O. Box 10142, Riyadh, 12212
Tel: +966 9200 17055
www.kone.sa

Egypt

KONE LLC
Plot no.10 B, Mohamed Naguib Axis,
Fifth Settlement,
O1 Mall, KONE 2nd Floor, New Cairo.
P.O. Box 11841
Tel: 0800 000 9733
www.kone.eg

Morocco

KONE Elevators & Escalators SARL
Lot Marjana N6,
Sidi Maarouf, Casablanca.
P.O Box 20280
Tel: +212 522 580211
www.kone.ma

Qatar

KONE Elevators WLL
Ghanem Office Tower,
Building No. 54, Street No. 640,
Zone 23, Salwa Road,
Bin Mahmoud Area, Doha.
P.O. Box 37143
Tel: +974 4488 8835
www.kone.qa

Oman

KONE Assarain LLC
Hatat Complex B, Office 103, 1st Floor,
Wadi Adai, Ruwi 112, Muscat.
P.O. Box 1475
Tel: +968 2465 7000
www.kone.om

Bahrain

KONE Elevators WLL
Building 767, Office number 61,
Road number: 3629,
Block number: 336,
Adliya, Kingdom of Bahrain.
P.O. Box 21303
Tel: +973 1774 9271
www.kone.bh

Kuwait

Laila Tower, 14th floor, office 3,
Salmiya, Kuwait.
P.O. Box 21119 - Safat 13072
Tel: +965 2571 3531
www.kone.com.kw

Tunisia

KONE Elevators & Escalators SARL
Ensemble Immobilier Miniar,
Rue du lac d'Ourima,
1053 les Berges du Lac
Bureau B41 au 4ème étage - Bloc A.
Tunis, Tunisia
P.O. Box 1053
Tel: +216 299 80610
www.kone.tn

East Africa (Kenya and Uganda)

KONE NAIROBI (Head Office)
Mercure Hotel Annexe, 13th Floor,
Longonot Road, Upperhill, Nairobi, Kenya.
P.O. Box 35174 00100
Tel: +254 115 848 603
www.kone.co.ke
www.kone.ug

South Africa

KONE Elevators South Africa (Pty) Ltd,
Unit 11, 11B Riley Road,
Eastwood Office Park,
Bedfordview Ext. 328, 2007
P.O. Box 11540
Tel: +27 11 035 1800
www.kone.co.za

Türkiye

İçerenköy Mah. Değirmenyolu Cad.
No:28 Asiaofispark B Blok D:3 Kat:2
P.O. Box 34752 Ataşehir/İstanbul.
Tel: +90 444 5663
www.kone.com.tr

Kazakhstan

KONE Kazakhstan LLP
D.Konayev Street 12/1,
floor 9, 010017,
Astana, Kazakhstan.
P.O. Box Astana 010000
Tel: +7 702 335 3389/3317
www.kone.kz

This publication is for general informational purposes only and we reserve the right at any time to alter the product design and specifications. No statement this publication contains shall be construed as a warranty or condition, express or implied, as to any product, its fitness for any particular purpose, merchantability, quality or representation of the terms of any purchase agreement. Minor differences between printed and actual colors may exist. KONE MonoSpace® DX, KONE EcoDisc®, KONE Care® and People Flow® are registered trademarks of KONE Corporation. Copyright © 2024 KONE Corporation.
www.kone.ae